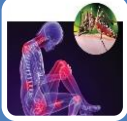


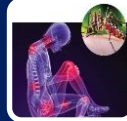
**ITALIA: FOCOLAI AUTOCTONI DI INFEZIONE DA VIRUS CHIKUNGUNYA**  
(aggiornato al 13 ottobre 2017)

**ITALY: AUTOCHTHONOUS CASES OF CHIKUNGUNYA VIRUS**  
(updated 13 October 2017)



**358 Casi notificati totali:**

297 Regione Lazio  
54 Regione Calabria  
4 Regione Emilia-Romagna  
1 Regione Marche  
2 Paesi Europei (Francia/Germania)



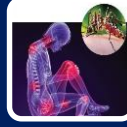
**358 Total notified cases:**

297 Lazio Region  
54 Calabria Region  
4 Emilia-Romagna Region  
1 Marche Region  
2 European Countries (France/Germany)



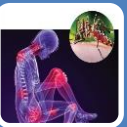
**183 casi confermati totali:**

170 Regione Lazio (Anzio, Roma e Latina)  
9 Regione Calabria (Guardavalle marina)  
1 Regione Emilia-Romagna con legame epidemiologico Anzio  
1 Regione Marche con legame epidemiologico Anzio  
1 Francia con legame epidemiologico Anzio  
1 Germania con legame epidemiologico Roma



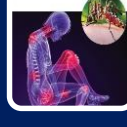
**183 Total confirmed cases:**

170 Lazio Region (Anzio, Roma and Latina)  
9 Calabria Region (Guardavalle marina)  
1 Emilia-Romagna Region with epidemiological link to Anzio  
1 Marche Region with epidemiological link to Anzio  
1 France with epidemiological link to Anzio  
1 Germany with epidemiological link to Roma



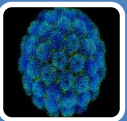
**175 casi probabili totali:**

127 Regione Lazio (Anzio, Roma e Latina)  
45 Regione Calabria (Guardavalle marina)  
3 Regione Emilia-Romagna con legame epidemiologico Guardavalle marina

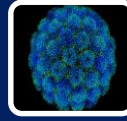


**175 Total probable cases:**

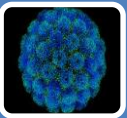
127 Lazio Region (Anzio, Roma e Latina)  
45 Calabria Region (Guardavalle marina)  
3 Emilia-Romagna Region with epidemiological link to Guardavalle marina



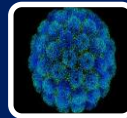
**168 (47 %) MASCHI**  
**190 (53 %) FEMMINE**  
Età mediana: **54 anni** (range: 0-93 anni)



**168 (47 %) MALES**  
**190 (53 %) FEMALES**  
Median age: **54 years** (range: 0-93 ys)

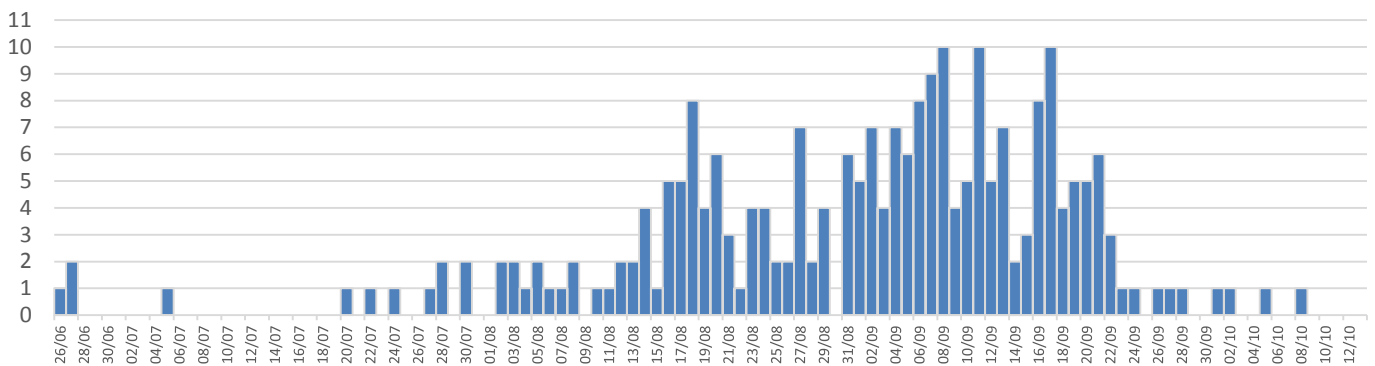


Gravità dell'infezione  
Ospedalizzati **24 (6 %)**  
Deceduti **1 (0.28 %)**

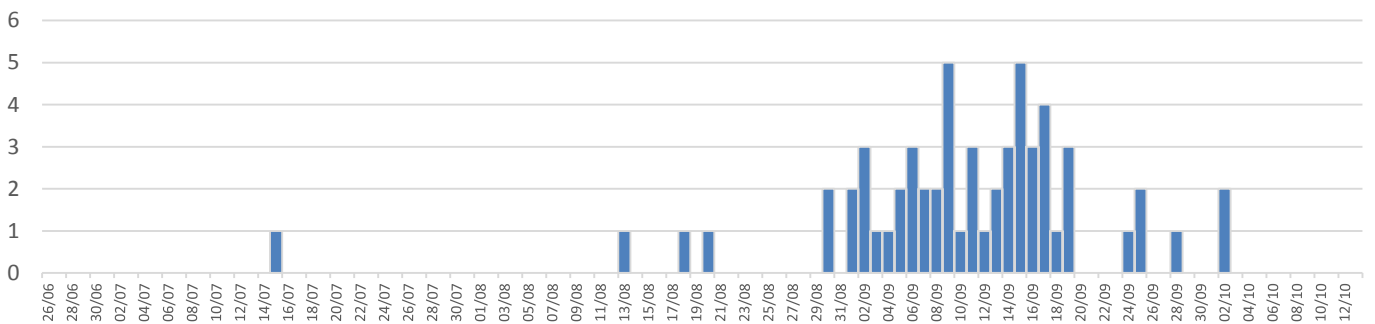


Severity of infection  
Hospitalized **24 (6 %)**  
Mortality **1 (0.28 %)**

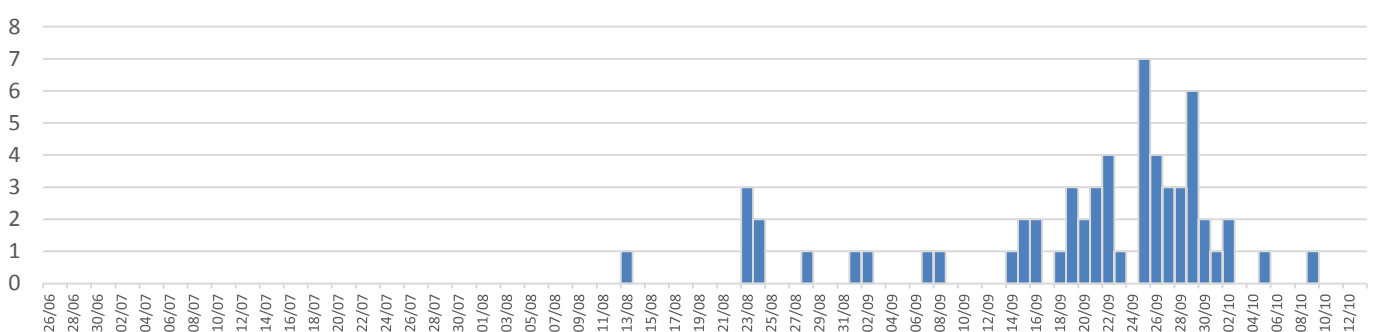
**ANZIO: Curva Epidemica (abitanti ad Anzio o casi epidemiologicamente correlati), per data insorgenza**  
**ANZIO: Epidemic curve (Anzio residents or cases or epidemiologically linked), date of onset**



**ROMA: Curva Epidemica (nessuna storia di viaggio) per data insorgenza sintomi**  
**ROME: Epidemic Curve (no history of travel), date of onset**



**Regione Calabria (Guardavalle marina): Curva Epidemica, per data insorgenza sintomi**  
**Calabria Region: Epidemic Curve, date of onset**



**Fonte:**

Piano nazionale di sorveglianza e risposta alle arbovirosi trasmesse da zanzare (Aedes sp.) con particolare riferimento ai virus Chikungunya, Dengue e Zika – 2017. I dati pubblicati possono subire delle variazioni da una settimana all'altra a seguito di nuove segnalazioni e/o validazioni dei casi precedentemente segnalati. In ogni nuovo numero del bollettino vengono aggiornati i dati di tutte le settimane precedenti.

**Source:**

National Plan of surveillance and response to arbovirus transmitted by mosquitoes (Aedes sp.), with particular reference to Chikungunya, Dengue and Zika viruses – 2017. Published data can vary from one week to another following new notifications and/or validation of previously notified cases. In each new bulletin, all data are updated.